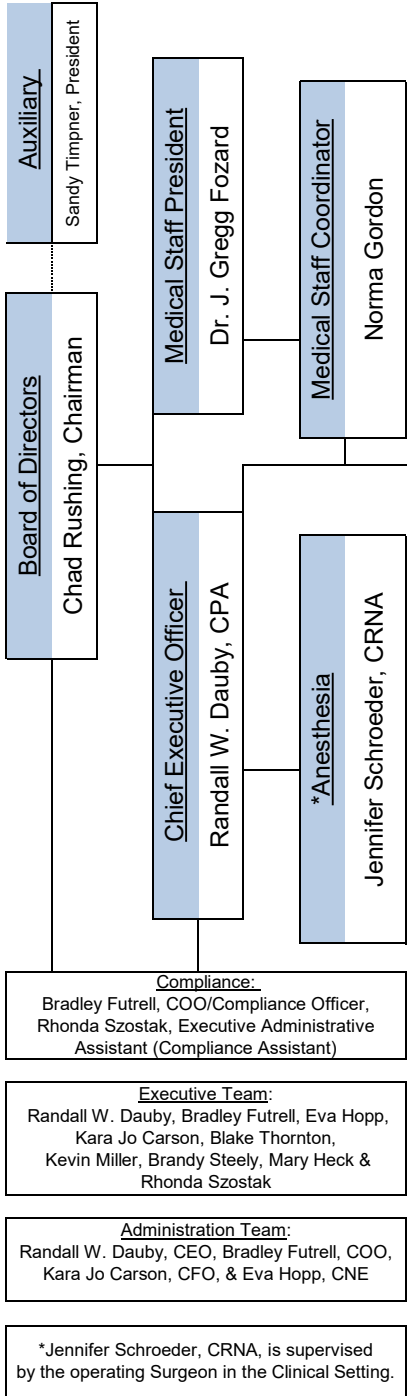


Pinckneyville Community Hospital - Organizational Structure Effective 09/15/25



Chief Operating Officer: Bradley Futrell
Compliance Officer, HIPPA Privacy Officer, Contract Management, Information Technology, Rehabilitation Services & Family Medical Center
Chief Nurse Executive: Eva Hopp
Medical/Surgical Unit, Emergency Department, Case Management, Central Service, Infection Control
Chief Financial Officer: Kara Jo Carson
Accounting, Cash Management, Statistical Reporting, Accounts Payable, Audits, Cost Report, Payroll, Grants
Human Resources Director: Mary Heck
Human Resources, Workers' Compensation Safety Liaison
Director of Quality & Risk Management: Blake Thornton
Quality/Risk Management, Illinois Provider Trust Liaison, Emergency Preparedness
Marketing Director: Brandy Steely
Marketing, Public Relations, Community Education, Special Events, Hospital Website & Social Media, Volunteer & Auxiliary Coordinator/Liaison
Maintenance Engineering: Kevin Miller
Bio-Med, Building & Grounds, Construction, Communication Systems, Engineering, Maintenance, & Safety Officer
Information Systems: Jeffrey Roberts
Information Systems Technology, HIPAA Information Security Officer
Environmental Services: Angela Hawes
Housekeeping, Laundry, Linen
Food Service: Rebecca Harris
Food Service, Cafeteria, Meals on Wheels
Wellness Center/Rehabilitation Services
Director of Rehab Services: Dan Varel Operations Manager: Vicki Brown
**RHC Medical Director: Dr. J. Gregg Fozard
RHC Physicians, Physician Assistants, Nurse Practitioners, **Patient Care
RHC Clinical Manager: Jackie Berg
Nursing, CMAs, CNAs Behavioral Health
RHC Business Office Manager: Vicki Brown
RHC Business Office, Accounts Receivable, Cashiering, RHC Communication, Reception
**Patient Care issues addressed in conjunction with Director of Quality & Risk Management, RHC Medical Director & Clinical Manager.

Nicole Akins
Medical/Surgical Unit
Beth Inman
Emergency Department
Kim Kretz
Respiratory Therapy Specialty Clinics Cardiopulmonary Rehabilitation Wound Care Clinic Sleep Lab
Lacy York
Imaging, Mammography, Nuclear Medicine, Ultrasound, DEXA scan, CT & MRI
Tanya Seifried
Laboratory Blood Bank
Rose Thornton
Health Information Management
Jill Kellerman
Pharmacy
Janet Morrison
Patient/Staff Clinical Education CHF Clinic
Maria Reyes
Surgery Recovery Room
Social Service - Contracted MSW Consultant
Onsite contact Michelle Headley, Social Service Coordinator
Brittany Heisner
Senior Life Solutions
Diedra Restoff
Cancer Care & Infusion Clinic
Sherrie Morse
Case Management
Connie Bush
Infection Control
Marie Perkey
Hospital Business Office: Registration Accounts Receivable Credit/Collections Cashiering
Jenna Howerton
Materials Management: Purchasing/Receiving/Inventory